





THE BIG QUESTION

Can you offer our 30 under 30, class of 2019, career advice by saying one thing you would have done differently



BRONTE TURNER, MANAGING DIRECTOR, HLW LONDON

I wish that I had really realised and appreciated the freedom that being 20-something actually gives you – in life and in your career. If I was 25 now I would have used ALL my holiday to explore even more of the world (and take the time to appreciate it). I would take more risks in my work, designs and planning my future, and I would realise not to rush into the next phase of my life and career, which may bring less freedom but as much fun, challenges and enjoyment!



MARK ALCORN, MANAGING DIRECTOR, C2:CONCEPTS

Tricky question that! Two things come to mind; I shouldn't have worn the loud trouser-braces in the late 80's – but that was retail for you. I loved my spell at Addison and actually I should have spent longer in that area of design but it's amazing watching retail, leisure and workplace design merging and mutually influencing each other today. The second thing: I should have kicked-off c2 concepts a few years earlier as time and tide wait for no man.



ELENA PANAGIOTIDIS, SENIOR ASSOCIATE, PERKINS+WILL

This is a fickle industry and can be tiring and heavy on the soul. Find what excites you and pursue that, enjoy your work and keep learning from your peers. I wouldn't change anything I have done, but I always look at things from a fresh perspective and the moment this feels like a 'job' I will walk away. Design is a passion – have fun.



KRISTOFF DUBOSE, FOUNDER, CIRKULARIS8

It's a demanding career. But there's nothing like living inside your imagination, seeing that dream become reality. There's one place where the magic really happens. And that place is in your ability to listen. I came into this path headstrong and I really wish I had listened more to those around me. If you're smart, be sure you're not the smartest one in the room and surround yourself with brilliance.



WAYNE TAYLOR, CHIEF EXECUTIVE OFFICER, SPACE ZERO

If you want to grow your business, build a quality team around you as early as possible – don't ever skimp when investing in your people. It may seem painful and a lot of money at the time, but you can't afford not to. Quality people pay for themselves many times over and allow you the time and headspace you need to run and develop the business.



TIM VERRAN, AUDIO VISUAL SPECIALIST, VISAVVI

One element that kept me in a good place both professionally and personally was integrity, which has that old quote, 'Will you sleep well at night knowing...?' This often brought good fortune, because you are comfortable in how you conduct yourself either when specifying product/services or buying the round at the pub. People trusted that you were doing the right thing. Integrity then brings other things, like having the right balance in day-to-day activities; work when you are meant to and give time to your personal life. If you stay consistent with the right balance, you will be satisfied in your performance, with time to smell the roses.



Following last year's resounding success, Umbrella Furniture will once again open their doors as 'Umbrella + Friends'! Key features include latest product launches from the Stockholm and Milan Design Fairs and exhibition spaces.

To register for all our showroom activities, go to umbrellafurniture.com/cdw2019-umbrella-and-friends or email us at cdw@umbrellafurniture.com.

CLERKENWELL DESIGN WEEK

21-23 MAY 2019

Umbrella + Friends

www.umbrellafurniture.com

When we're asked what our favourite Mix features are, the 30 under 30 - our annual celebration of the interior design market's young, emerging talent - is right at the top. Our 30 under 30 is now seen as a serious accolade - and we couldn't be prouder of that. So, without further ado, let us introduce you to 2019's rising stars.

30 UNDER 30

MIX INTERIORS



Ashleigh Biggins

ASHLEIGH BIGGINS

DENTON Ashleigh joined Denton in November 2018 as a Senior Interior Designer. In a short period, Ashleigh has made a significant and positive impact on the business and has firmly established herself as a major contributor to the growth of Denton in the north, particularly Manchester, with Park Group a notable recent win. Offering an extensive and broadened experience within the Design & Build industry, Ashleigh's role focuses on winning work and developing the brief and design concept directly with the client. Ashleigh offers added value in everything she turns her hand to, ensuring the scope and design is aligned with client expectation and costs, all through industry-leading workplace design solutions. Ashleigh's greatest strengths are her humility and commitment, striving for the best outcome for the client. A future leader, Ashleigh displays an aptitude that exceeds her youth and is an asset every business strives for.



Mehdi Jelokhani

MEHDI JELOKHANI

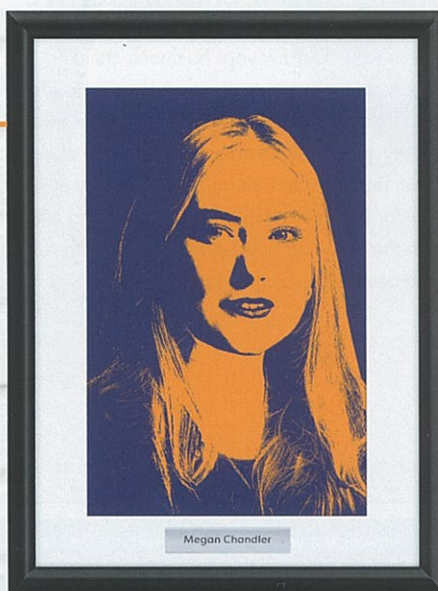
PERKINS+WILL

Mehdi joined Perkins+Will as a graduate of interior architecture at the University of Westminster. He stood out at his degree show with beautiful large-scale colourful sketches. With his conceptual abilities, clarity of thought and sensitive approach to design, he has become a valued member of our studio. He recently designed the interiors for a Fintech company in Budapest, which won the Hungarian 'Office of the Year'. Mehdi is passionate about all areas of design. He has worked on the interior elements of a hospital in the Middle East, next generation coworking spaces in Milan, a guest experience of the future for a professional services firm in London and, most recently, a unique and elegant staircase for one of our financial clients.

We have loved seeing Mehdi grow in confidence and hone his skills with us over the last four years. He's definitely one to watch!

MEGAN CHANDLER

Megan is an inspirational and highly motivated designer. After initially starting at HOK as a work placement, it was clear that Megan had a flair and passion for interior design. Completing her degree at The Sir John Cass School of Art, Architecture and Design in 2017, she decided to return to the HOK family to embark on her career. She initially began her journey within the healthcare sector, and has more recently been working on fit-outs for large consultancy clients, such as Gartner, and global financial giants, such as KPMG. Megan has the ability to work throughout various stages of a project, including concept design, FF&E, presentations and the delivery, from beginning to conclusion. Megan develops key relationships with her clients by listening to their ideas and also understanding what their aspirations are, whilst working with them through every stage of the project to deliver solutions in a fun and creative way.



Megan Chandler



Charlotte Bradney

CHARLOTTE BRADNEY

Peldon Rose

Since Charlotte joined Peldon Rose, she has made a massive impact on the design team. She

has helped to push our design team forward with her creativity, inventive solutions and innate ability to engage with clients. Peldon Rose avoid working to a house style, so each of their designs possesses a unique quality that is specific to the requirements of each client. Charlotte embodies our approach and is capable of working across all sectors, creating edgy interiors for the likes of GoCardless and The Good Agency, as well as producing sophisticated, thoughtful interiors for fashion brands like Whistles and Hobbs. Charlotte has been the driving force behind the design of our own office refurbishment in Wimbledon. She has designed a forward-thinking space, which will allow our teams to work closer and continue to create award-winning interiors for years to come.



Maria Framis

MARIA FRAMIS

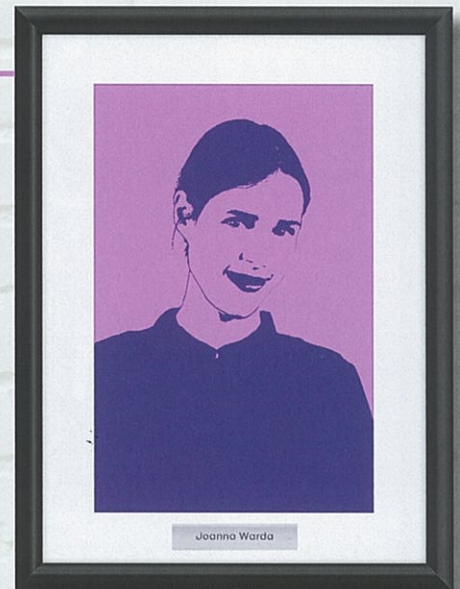
Gensler

Maria is a passionate designer and a visionary with a keen eye for detail. She combines the unique ability to articulate strong design concepts with the ability to bring truly innovative ideas to life to develop meticulously detailed and compelling architecture. A natural leader and a trusted advisor to her clients, her unfaltering determination to follow through on the many high profile projects she's led – from Estee Lauder's 50,000 sq ft EMEA headquarters in Paris, to Microsoft's first European Accelerator Hub in London – has inspired many at Gensler and beyond. Maria is also a fantastic mentor and will always take the time to stop and explain her design ideas to junior and senior colleagues within her team, no matter the timeline pressure. Maria is described as a true designer. She has the natural ability to understand what is truly important on a project to create spaces that are powerful and memorable.

JOANNA WARDA

Joanna is a creative young designer who thrives in all elements of the design process from developing imaginative concept ideas, to creating thoughtfully detailed design elements. Having joined Scott Brownrigg in 2018 she always finds time to support her colleagues and has quickly become an integral part of the Interiors team, respected by other designers and client alike. Specialising in workplace design, her recent work includes Thomson Reuters, NCR, Expedia and new designs for Refinitiv's first ever HQ in London. She has also been intrinsic in creating an exciting new workplace concept installation 'Unboxed' at Orangebox's showroom for Clerkenwell Design Week. A key strength is Joanna's all-round ability is her dedication to coming up with innovative interiors to suit a wide range of client ambitions, with an end goal to design an environment to be proud of.

**SCOTT
BROWNRIGG**
INTERIOR DESIGN



Joanna Warda

RUBEN LOPEZ

unispace

Ruben Lopez always says that the only job he

can do in life is design. Even when he is not working he is with his notebook sketching his projects. A humble and open-minded designer, Ruben always tries to adapt to the client and team he works with. He also strives for perfection, learning from each project and improving his skills. A genuine lover of details, Ruben stands out due to his diligence and dedication to his work.

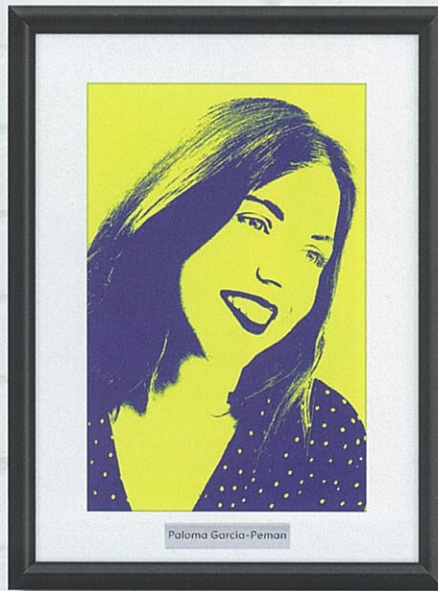
Currently, Ruben is working on a high-profile campus project in Switzerland. Having been a part of this project since the initial pitch, he has been an integral member of the team. Ruben is proud to be a part of an incredible team that continues to create amazing work. He calls this '30 under 30' honour one of the happiest moments of his life.



Amy Carrick

AMY CARRICK

HASSELL Amy is one of HASSELL's most well travelled and sought-after designers, having honed her skills across studios in Australia, Singapore and now the UK. Her people-orientated approach brings a highly considered and conscientious bent to each new project. This attention to detail is applied from the earliest stages of concept development, right through to on site realisation of projects. Her open and direct communication style has seen her develop deep and trusted relationships with clients and design team members alike. Amy has been a key member of award-winning teams across the workplace, hospitality and higher education sectors, and she is currently working with one of the world's leading tech brands as they look to expand their presence across Europe.



Paloma Garcia-Peman

PALOMA GARCIA-PEMAN

LOM Paloma joined LOM architecture and design in early 2018 and has already established a key role in our interior architecture team, developing everything from concept sketches through to complex technical details. With architectural training in France and Spain and experience in residential, hospitality and commercial interiors, Paloma has been able to take on a wide range of different projects with ease. Over the past year she has helped deliver a conference centre in the City of London, created the concept for Oracle's wellness centre in Paris and designed a new lounge space at Kuwait Airport. Her key piece of work this year has been NatWest's new collaborative working hub, where Paloma played an important role in creating the interior design vision and delivering it through a mix of bespoke joinery, carefully specified workplace furniture and beautiful environmental graphics.

DAVID HARTE

David has a broad range of experience within the hospitality sector, working for large multinational and independent hotel groups in the UK and internationally on all aspects of the design process, from concept to construction. Recent projects include Hotel du Vin, Stratford-Upon-Avon, and Hyatt Place Heathrow Airport. He is currently working on luxury hotel projects in the UK and Dubai and a coworking brand in Kenya. David established a proven ability to deliver projects in the UK early in his career. His meticulous attention to detail, commercial outlook and ability to nurture client relationships are unusual in a designer of his age.

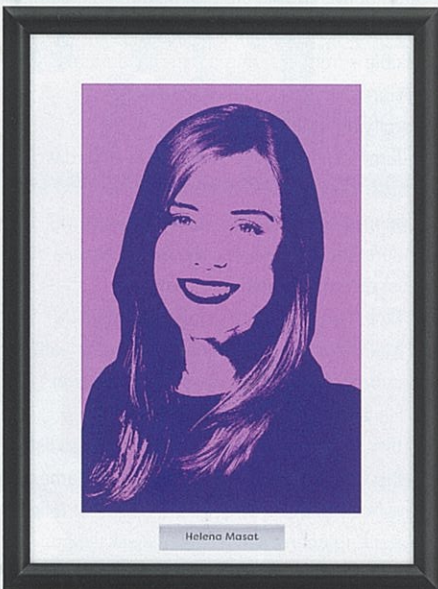
dexter
moren
associates



David Harte

HELENA MASAT

MODUS: Helena began her career in design with Modus straight from university. Her conscientiousness, detail focused approach, personality and thirst to learn and grow have earned her an esteemed reputation within the industry. Now an Intermediate Designer, Helena has successfully run projects from concept to completion for global brands in travel, media, commercial, hospitality and fashion sectors. Most recently, her achievements include the five-level multi-million-pound project for Maslow's at Mortimer House and Studio 19 for beauty powerhouse, SLG Brands. An undeniable passion, creativity and fresh perspective are what sets her apart, as well as her meticulous approach and diligence, consistently delivering above and beyond expectations. Her gentle nature, eagerness to lend a hand and push boundaries means she dives into any challenge put in front of her. Helena builds influential relationships with her clients, constantly learning, evolving and ultimately making her the designer she is today.



Helena Masat

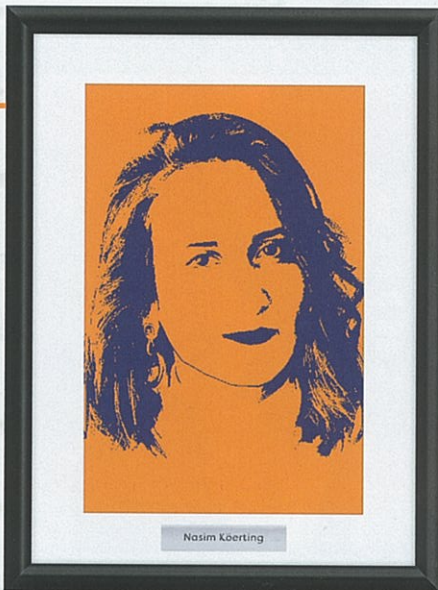
In association with



NASIM KÖERTING

Nasim is an interior architect/designer originally **studioköerting.**

from Sydney, Australia, who is currently running her own London-based design studio. Her inspiration derives from a variety of sources, including her heritage and contemporary art, design and architecture. She has been running award-winning projects for design studios, including HASSELL and Softroom, for many years now. She began her own studio alongside her partner Jan over two years ago. They have been working on a range of projects, from private residential clients to large-scale commercial corporations. She is currently working on projects with Nike, Harbour Space University and Hawstone Hall Hotels. Aside from day-to-day project work, Nasim has been contributing to the Financial Times' 'House and Home.' She is also currently designing a rug collection with Totzke flooring, with proceeds of every rug sold going back to the education of the local women in the Indian community where the rug is manufactured.



Nasim Köerting

In association with



EMILY FIDDES

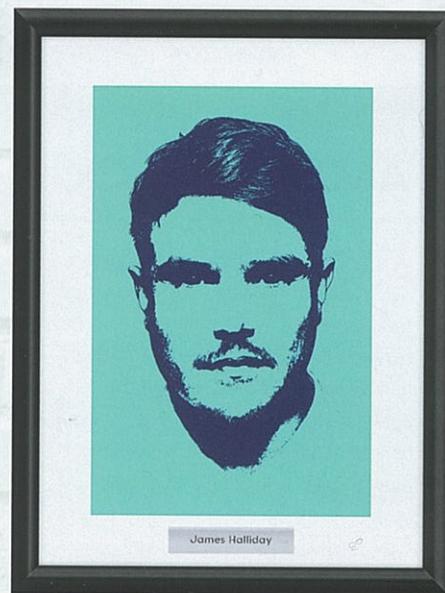


When IA first met Emily in September 2017, she immediately impressed with the confidence and passion she projected in presenting her master's thesis – A Creative Incubator and Microbrewery; Finding

Similarities Between the Brewing and Design Process. Building on her final dissertation on environmental psychology, Emily designs from the inside out, considering the psychology of spaces and how human behaviour affects design. She has become an indispensable member of the IA London family and stands out on many levels. Less than one year after Emily expanded her career into workplace interior design, what especially impressed was the extremely positive feedback on her design and presentation skills from a demanding and educated client with whom we are working. Her clients include a leading global online retailer, with whom she is working on projects in Madrid, Bratislava, and Paris. She is also designing for MasterCard and conducting workplace strategy for Ireland's national radio and television broadcaster.



Emily Fiddes



James Halliday

JAMES HALLIDAY

SQUIRE & PARTNERS

James Halliday joined Squire & Partners in 2013 and became an associate in 2017. He is a talented all-round designer who leads a team of five people on multiple projects with seeming ease. James is multitasking and flexible – from creating concepts, detailed design and producing killer sketches, to specifying materials and FFE.

James' balance of dedication and hard work, and an easy-going nature makes him the ideal colleague to work with. James is quick to understand the task at hand and assesses the most expedient method of delivery.

Most recently, he has delivered Ministry of Sound's first social workspace and private members' club at The Ministry, in Borough.

He is currently working on Haggerston Baths, a new coworking space in derelict, listed baths; an office refurbishment at 78 St James; a new headquarters at Whitfield Street for Elliot Wood Engineers; and Sogex Villa in Oman.

PAM D'ALESSANDRO

Pam is an exceptional team player and an all-round great colleague to have around the studio. She has developed exceptional REVIT skills that support the way she communicates her innovative approach to design. Over the last year, Pam has been integral to designing and delivering really diverse projects for Google, The Health Foundation and SAP. We look forward to seeing Pam's development in the future. Pam brings a fantastic balance of great design, great commitment and great personality to both our clients and our studio.



Pam D'Alessandro



Jemima Oliver

JEMIMA OLIVER

HLM

Jemima was first introduced to HLM whilst completing a placement when studying at Plymouth University. The following year, with her studies completed, Jemima joined HLM full time. Since joining the HLM interior team, Jemima's commitment to social architecture and sustainability, along with a passion for delivering really great work and a vibrant outlook, has been an incredible asset to HLM's Cardiff studio,

GABRIELLE KENNETT

Gabrielle Kennett is an ambitious, driven designer with a background in retail design such as Footlocker's flagship store in Marble Arch and the Guildford Hummingbird Bakery. Very much focused on working through the detail to create innovative and inspiring designs, Gabi joined the Egham design team in 2018 looking to get a taste of the workplace sector. She uses her understanding of creative, but practical, spaces to challenge the brief and consider the way clients interact within environments. Gabi is one to watch, with a healthy competitive streak in and out of work taking part in charity activities such as this year's triathlon team as well as being crowned the Area Bake off Queen!

area



Gabrielle Kennett

with a portfolio that now covers hospitality, workplace, education and defence. Having recently developed a concept scheme for IHG, delivering Wales' first Staybridge Suite property for the brand, Jemima is currently delivering a tender submission for a high-end meeting suite within Canary Wharf's 20 Canada Place. Never sidestepping a challenge and always looking for ways to develop HLM's interior design offering, Jemima is certainly one to watch.



Creating breathtaking interiors requires intelligent design, and at the heart of any interior experience is exceptional lighting.

Tel 01727 836 695 Email sales@mountlighting.co.uk

mount
LIGHTING THE WAY

www.mountlighting.co.uk



Peter Vrahimis

PETER VRAHIMIS

**Arney
Fender
Katsalidis**

Peter is a vital member of our firm and has been instrumental in both the early stages and throughout some of the biggest projects in our studio (such as 100 Bishopsgate, Brookfield Place Calgary, and the S4 Building at the International Quarter). He is a talented designer, a great mentor and leader, and a kind and compassionate colleague. He is a real asset to our practice and truly beyond his years. Peter's unparalleled commitment to our business and his dedication to the success of the firm is nothing short of astounding. He is always the glue keeping everybody together and on track, even under immense pressure. Peter has been with us almost since we founded the company in the UK six years ago and he has learned so much and continued to develop professionally over this time.

STEVIE LEIGH

It has been a delight working with Stevie over the past two years. She has quickly become a highly valued member of our interior and architectural teams and her talent to combine conceptual thinking with the ability to deliver successful projects is an asset to the company. As an integral member of the team, Stevie helped to deliver the National Horizons Centre for Teesside University. She was key to the design and refurbishment of several MUFC first team facilities, along with the creation of a VIP lounge at the Carrington site. Stevie also completed a successful re-design of the reception area at No.3 Piccadilly Place and is currently bringing her creative flair to two laboratory buildings that are being refurbished for Bruntwood at Alderley Park.



Stevie Leigh



Sarah Davies

SARAH DAVIES

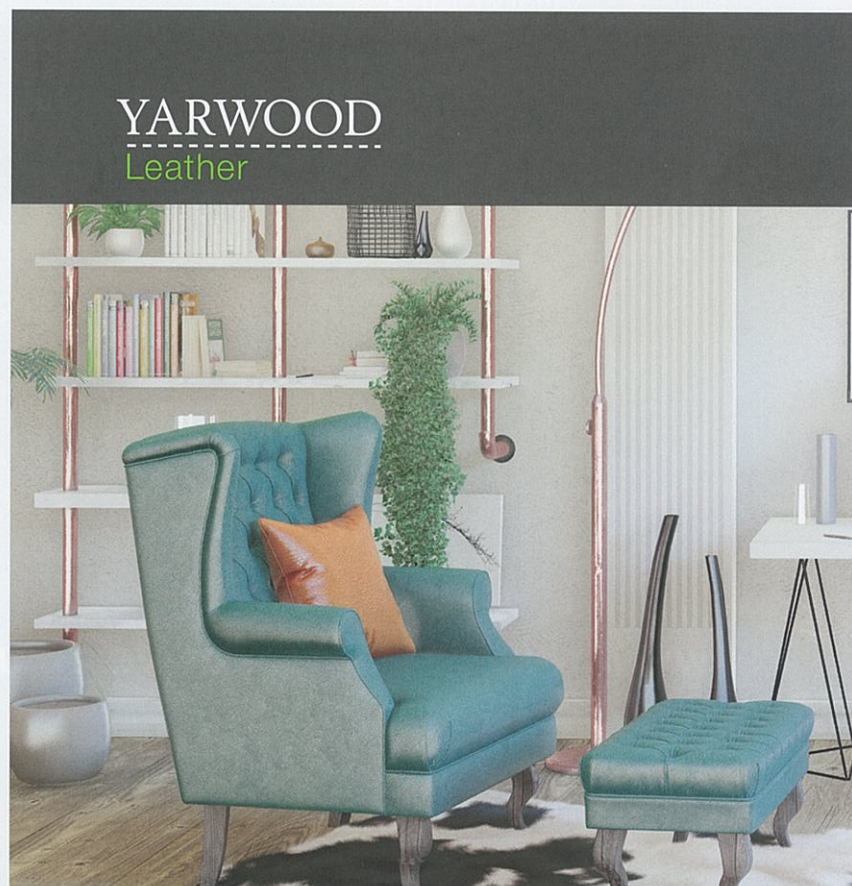
M MOSER ASSOCIATES



Sarah joined our M Moser London team in 2018 and

has since been working on one of our most high profile and technically challenging projects. She is an enthusiastic and creative designer who has a keen eye for detail. Her conscientious and diligent approach means she has gained huge amounts of trust and respect from both clients and colleagues. She is a joy to work with and we look forward to seeing how her continued growth and becoming a leader within the industry.

In association with



YARWOOD
Leather

Upholstery Aviation Hospitality Office Automotive Healthcare Marine

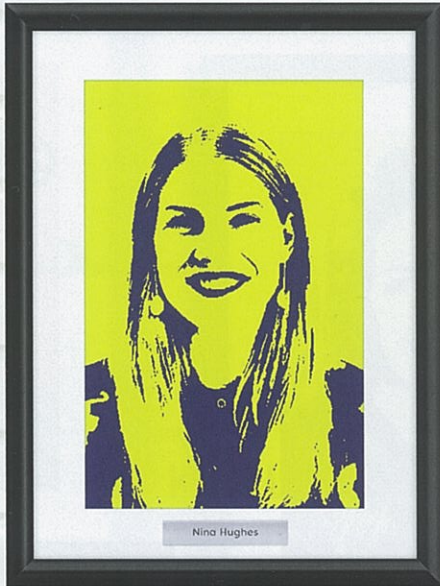
Yarwood Leather has you covered.

www.yarwoodleather.com

+44 (0) 113 252 1014

sales@yarwoodleather.com

In association with

@lgood
QUALITY SINCE 1948**hunters**
The Furniture Company**morgan**

Nina Hughes

NINA HUGHES

Basha—Franklin

Nina has been with Basha-Franklin for only the past six months, however, she has proven to be a fantastic addition to the team with very impressive results on the work she has been producing. Nina has been working on several projects throughout Europe and Scandinavia for RBS, plus a dynamic coworking project. Her sharp eye for colour, texture and form has strongly connected to our client's culture and brand but with a fresh and directional approach. What sets Nina apart is her strong emotional intelligence, which can quickly connect with our client, project and team needs. She's a natural leader who has been very proactive with managing and mentoring junior staff, ensuring they reach their full potential. Nina's middle name is Joy and that is a true definition of who she is as a person. Consistently upbeat and optimistic, she creates an endless source of joy and positivity in the studio.



Julia Sanchez-Styles

JULIA SANCHEZ-STYLES

AECOM

A dedicated and proactive designer, Julia joined AECOM

in 2017, following the completion of her Honours Degree at the Glasgow School of Art and École Camondo in Paris. In a short timeframe, she has gained fantastic experience, working on exciting large-scale projects from concept stage through to completion.

Her ability as an all-rounder to move between roles and responsibilities makes her an outstanding young designer who is actively 'sought out' by seniors to work with them as a key team member. She has a hunger to learn and grow within the design industry, showing a keen interest in the conceptual approach to design and the way that innovative user experiences can translate into exciting and functional spaces, in any sector.

Her enthusiasm and natural 'can-do' attitude separate her from the rest of the designers at her level, making her a confident and ambitious young leader.



Zoe Parr

ZOE PARR

interaction

Known in the company as someone who exudes creativity, Zoe has been instrumental in producing the creative solutions to win multi-million-pound projects. Zoe joined Interaction in 2014 through its university partnership, as an intern in her placement year, giving her the knowledge to achieve first class honours in interior design. Making the most of every opportunity, Zoe has risen to become a lead designer only a few years after graduating. From designing a Tron-inspired office with its own Cray super computer replica, to transforming a 1930's tool factory into an open coworking hub, Zoe's creative mind has no boundaries. When asked, 'What's the best thing about working at Interaction?' Zoe responded with: 'Being surrounded by creative, motivated and fun people, whilst having freedom and opportunity to design bespoke and unique workspaces.' With Zoe's depth of knowledge and passion for design, it is clear she is a rising star.

SARAH BEWERS

Sarah's career began in change management and



THIRDWAY

consultancy but she always felt her calling was in design.

After a decade of toying with the idea, she took the bold step to retrain. After she approached ThirdWay, the Design Director immediately recognised Sarah's talent – and she's spent the last 18 months working on a myriad of projects, ranging from a small but perfectly formed workspace for Langholm Capital through to a 12,000 sq ft Cat A space for a significant developer. Her favourite project is also her most recent – Kew Media's HQ in Soho – which has a heavy focus on biophilia and wellness. Sarah believes that her career change was the best decision she's ever made. 'The beginning of a new project, where anything is possible, is the most exciting time, but the most satisfying part of my job is the tangible and physical outcome of creating something,' she enthuses.



Sarah Bewers

FAITH PITTOCK

Faith has a very infectious and honest smile that can instantly change your mood. She always comes across extremely well, radiates warmth and openness, paralleled with a sharp and shrewd mind, which allows her to handle any situation well. Always a real team player, Faith is quite often one of the first people to volunteer for charity events and encourage the rest of the team to follow. Faith has amassed a wealth of knowledge within a creative industry – and she has done this by asking questions of the right people at the right time. Starting as a junior designer, she quickly developed to running her own project with confidence and hard work. Her attention to detail and dedication has led to her working on fantastic projects for GreenOak Real Estate, Adidas, and Grosvenor Estates. Faith develops unique and elegant designs that create a balance between the clients' brief, environment and careful consideration for future growth.

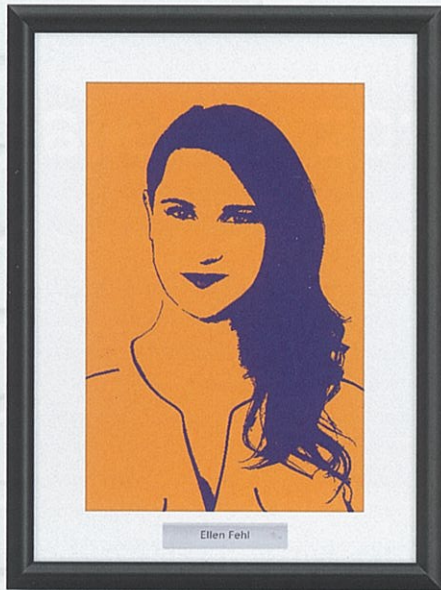
Morgan Lovell



In association with



ELLEN FEHL



oktra

Ellen has come a long way in workplace design – this is clear to all who work with her. Originally from Michigan, Ellen started her design journey in Detroit at an architectural firm, before transferring to the UK in 2014. She joined LTB, once a subsidiary company of Vensyn Group, where she helped to design over 222,000 sq ft of world-class coworking space in a year and a half. In 2017, Ellen transferred to Oktra, where she has matured as a designer incredibly quickly, transforming herself using a comprehensive knowledge of materials and coworking environments from her experience developing WeWork projects. With a keen eye for detail and avid listening skills, she finds a refreshing balance between fun and professionalism, drawing inspiration from her team. As a result of her hard work and loyalty, Ellen will now be leading the design for the firm's new business unit later this year.

LIZ DURCAN



Liz is a passionate and committed member

of the AEW family, since joining in 2017. Impressing with her drive and enthusiasm, delivering multiple high-level schemes, Liz has worked on fast-paced rollouts for global companies, taking on full project lead roles with direct engagement with our clients. She displayed her full set of design skills across multiple disciplines, with equal attention to current trends and focus on the end user experience. Her experience within the commercial office sector has proven a strong asset, designing fresh and innovative proposals. Most recently, Liz has led the design for a new amenity pod unit, taking on the challenge of designing the external aesthetics alongside the interior environment using her skills in REVIT with fantastic success and praise from the client. She has an exciting time ahead of her, continuing work on varying sector projects across the UK.

TUT ZHU

Tut first worked at BDP whilst studying for her MA at the RCA. She settled in remarkably quickly, working on a complex retail project in Moscow, impressing colleagues with her dedication, CAD skills and 3D abilities. After graduation, Tut joined BDP permanently and quickly became invaluable, completing the retail scheme, applying great patience, technical skills and creativity. Tut has since worked on numerous retail developments in the UK, Toronto and Germany. She has seamlessly crossed over to BDP's workplace team, becoming a key designer on PwC work, tackling everything from creative pitches, to concept design, detailed design, FF&E specification and planning, on a variety of projects. Tut rapidly developed her knowledge and skills within this sector and brought fresh ideas and creative solutions. Her pragmatic approach and adaptability have strengthened this fast-paced team; designs are visually strong, helping clients to fully understand the vision.





KAYLEIGH TSE



Kayleigh graduated from Ravensbourne seven years ago and has been a relentless force ever since. She first became known to us when she was working as a junior designer six years ago. Even then she showed a great understanding of design and had a remarkable ability to produce a great deal of work at speed. At Cirkularis8, she is now a Senior Designer, training up our juniors while also designing a 50,000 sq ft project for major San Francisco tech firm, Splunk. The clients have remarked that her work is the fastest and most complete they've ever had worldwide. They are also excited by the possibilities she's opened up to them through the design process – and they are already talking about this London project being a global showpiece. Kayleigh may be under 30, but has already built a reputation as a world-class designer that's in equal measure creative and practical.

AMIE BOSSON

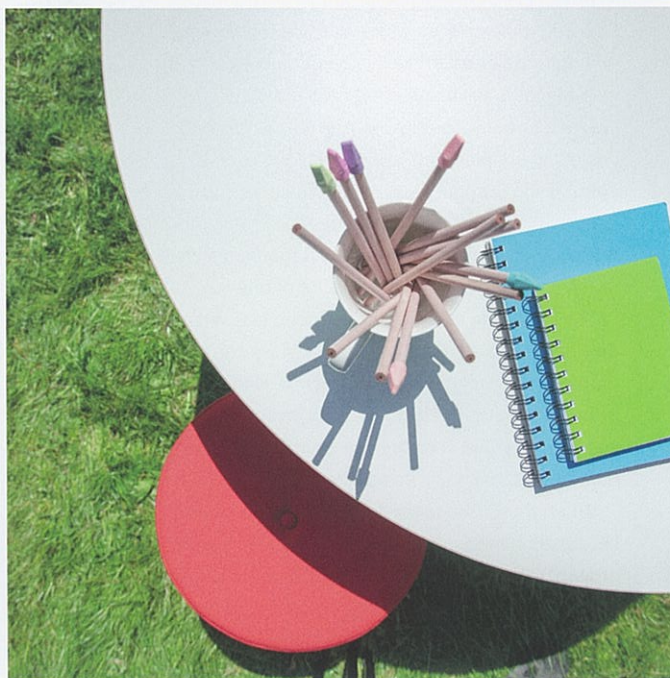


Anyone lucky enough to work with Amie will not only be inspired by her passion and meticulous approach to design, they will also have the best time, due to her infectious, cheeky humour. Amie



shone from the moment she walked in the door, and it would be impossible not to have noticed the growth in her confidence and creative capabilities since. Driven by more than what is directly in front of her, Amie is a natural problem solver. She always aims for better, and actively goes above and beyond to improve things for the wider team. Clients love her due to her ability to build honest, open relationships and, to quote a colleague, 'She's an off-the-charts team player!' Amie previously ran a high profile 60,000 sq ft project with ease and, most recently, took on her first lead role for a large-scale blue chip client, where her calming, humble leadership style really began to shine.

triumph



Leading UK furniture manufacturer



t 01685 352222 sales@triumphfurniture.com
www.triumphfurniture.com